

PRODUCT SHEET

FILLING POINTS & FILLING STATIONS

Transfer Lines

Conditioning
Equipment

Components

Filling Stations

Filling Stations

Controlling

The Demaco Filling Points & Filling Station are a safe and easy to operate solution for filling open and closed dewars with LN2, coming from a cryogenic storage tank. The Demaco Filling Station has been designed for ease of use and comes in four (4) types, ranging from **Open Dewar – Manual Filling** to **Open & Closed Dewar – Manual and Automatic Filling**.

On top of that, Demaco offers a variety of configurations which allows the end-user to personalize it's filling station and therefore, optimize customer productivity.

The pictures below show the type 4 **Open & Closed Dewar – Manual and Automatic Filling**. It is equipped with a manual and automatic filling hose, a GN2 return hose and a user friendly control unit.

Additionally it is possible to personalize the design print of the filling station, making it a real eye catcher!



Front view filling station Type 4.



Back view filling station Type 4.



Filling an open dewar manually

APPLICATION

Fast reaction times for liquid consumption

Safe and clean filling

Short interval periods of large consumption

Close to point of use

FEATURES

All stainless steel

High vacuum insulation

Pressure controlled (when using Phase Separator)

For open and closed dewars

Multiple configurations possible

Handles for safe filling process

Customer specific control unit

PRODUCT SHEET

FILLING POINTS & FILLING STATIONS



Filling point: un-insulated



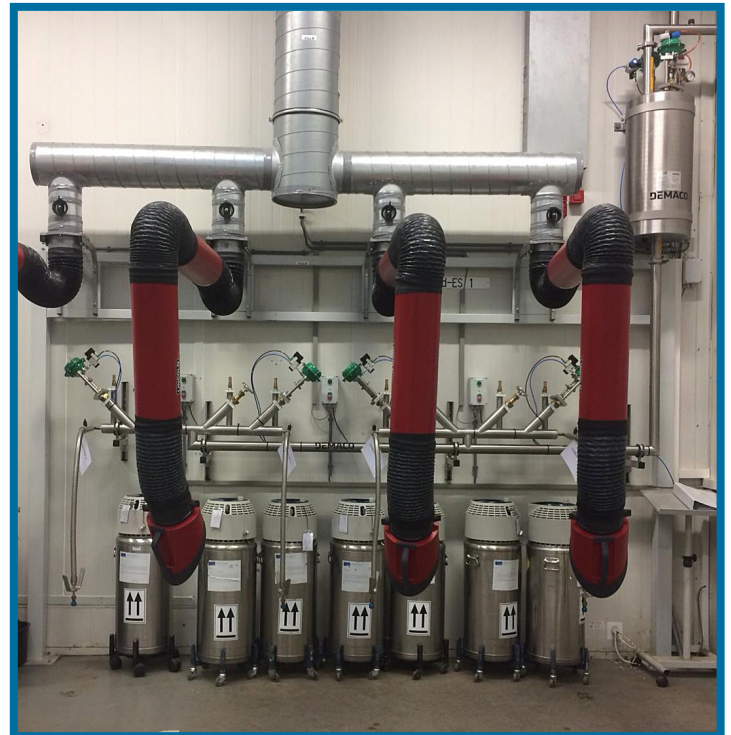
Filling point: vacuum insulated



Filling point: un-insulated valves & Phase Separator



Filling point: un-insulated valves & Phase Separator for open & closed dewars



Filling point: vacuum insulated & Phase Separator for LOX

PRODUCT SHEET

FILLING POINTS & FILLING STATIONS



Filling station with uninsulated valves



Filling station with vacuum insulated valves



Filling station with vacuum insulated valves and personalized sticker



Front view filling station Type 4.



Back view filling station Type 4.



Filling an open dewar manually

PRODUCT SHEET

FILLING POINTS & FILLING STATIONS



Type	1.	2.	3.	4.
Technical Specifications:	Open Dewar - Manual Filling	Open Dewar - Automatic Filling	Closed Dewar - Automatic Filling	Open & Closed Dewar - Manual and Automatic Filling
Application:	LN2 - Open dewars only	LN2 - Open dewars only	LN1 - Closed dewar only	LN2 - Open and Closed dewars
Inlet pressure:	1.5 bar(g) Optional: Phase Separator (max 10 bar (g))	1.5 bar(g) Optional: Phase Separator (max 10 bar (g))	2 bar(g) Optional: Phase Separator (max 10 bar (g))	1.5 bar(g) Optional: Phase Separator (max 10 bar (g))
Pressure control:	Not integrated (Optional: Phase Separator)	Not integrated (Optional: Phase Separator)	Not integrated (Optional: Phase Separator)	Not integrated (Optional: Phase Separator)
Operation open dewars:	Manual start and hold for flow	Manual start and automatic stop	✗	Manual start and hold for flow
Operations closed dewars:	✗	✗	Manual start and automatic stop	Manual start and automatic stop
LN2 inlet connection:	Demaco Johnston coupling DN25 Female	Demaco Johnston coupling DN25 Female	Demaco Johnston coupling DN25 Female	Demaco Johnston coupling DN25 Female
GN2 outlet connection:	Demaco Johnston coupling DN25 Male	Demaco Johnston coupling DN25 Male	Demaco Johnston coupling DN25 Male	Demaco Johnston coupling DN25 Male
Connection to Vessel:	✗	✗	3/4" x 16 UNF Female	3/4" x 16 UNF Female
Supply voltage:	230V AC	230V AC	230V AC	230V AC
Certification:	CE	CE	CE	CE
IP Code:	IP65	IP65	IP65	IP65
Main Material:	1.4301 (304L)	1.4301 (304L)	1.4301 (304L)	1.4301 (304L)
Finishing housing:	Personalised sticker	Personalised sticker	Personalised sticker	Personalised sticker
Quick stop:	Quick stop button	Quick stop button	Quick stop button	Quick stop button
Valves	Not vacuum insulated Optional: Vacuum insulated	Not vacuum insulated Optional: Vacuum insulated	Not vacuum insulated Optional: Vacuum insulated	Not vacuum insulated Optional: Vacuum insulated
Filling hose:	Not vacuum insulated Optional: Vacuum insulated	Not vacuum insulated Optional: Vacuum insulated	Not vacuum insulated Optional: Vacuum insulated	Not vacuum insulated Optional: Vacuum insulated
GN2 return hose:	Not vacuum insulated Optional: Vacuum insulated	Not vacuum insulated Optional: Vacuum insulated	Not vacuum insulated Optional: Vacuum insulated	Not vacuum insulated Optional: Vacuum insulated
Options				
Access control:	a. Keylock	✓	✓	✓
	b. SEP card access and tank credits	✓	✓	✓
	c. Scale and barcode reader	✓	✓	✓
Filling Hoses Vacuum insulated:	a. Open dewar	✓	✓	✗
	b. Closed dewar	✗	✗	✓
	c. VI GN2 return hose	✓	✓	✓
Filling Hoses Uninsulated:	a. Open dewar	✓	✓	✗
	b. Closed dewar	✗	✗	✓
	c. VI GN2 return hose	✓	✓	✓
Noise damping:	In case of Phase Separator	✓	✓	✓

DEMACO HOLLAND BV
OESTER 2
NL-1723 HW NOORD-SCHARWOUDE
T +31 (0)226 33 21 00
E INFO@DEMACO.NL

→ www.demaco.nl

